


Install and configure UniFi Identity VPN

<p>Open the email from identity@ui.com.</p> <p>Click the Get Started option.</p>	 <p>The screenshot shows an email titled "Welcome to UniFi Identity!". The sender is "UniFi <identity@ui.com>" and the recipient is "Mat Patton". The email content includes a greeting "Hi Matthew," and a message: "You have been invited to access UniFi Identity resources on this site: OFC Backup." Below this is a large blue "U" logo and the text "UniFi Identity Endpoint". There are icons for "Available on" including iOS, Android, macOS, and Windows. A blue button labeled "Get Started" is visible. At the bottom, there is an "Important:" section with two bullet points: "Your credential expires in 7 days and can be used on up to two mobile and two desktop devices." and "Do not reply to this email, as it is not monitored. Contact your admin for assistance or to request a new credential."</p>
<p>The download should automatically start for UniFi Identity Desktop Endpoint.</p> <p>If it does not, select the "download UniFi Identity Endpoint" option.</p>	<p>A screenshot of a computer errorAI-generated content may b</p>
<p>Once the file has downloaded, select it when it shows in the top right corner.</p>	<p>A screenshot of a computerAI-generated content may be incor</p>
<p>The application will load as shown.</p> <p>Select the checkbox to agree to the User License Agreement, and then select Install.</p>	<p>A screenshot of a phoneAI-generated content may be incorre</p>

If you see a User Access Control box, click Yes if available. Otherwise, select the “Request ThreatLocker Elevation” bubble and submit the request. Someone from the IT Support team will be in touch within 5 minutes (within normal business hours) with further instructions.

A screenshot of a computer errorAI-generated content may b



The application will start to finalize its installation.
Once it has completed, select the **Launch Identity Now** option.

A screenshot of a phoneAI-generated content may be incorre

Select the **Load Credential Manually** option.

A screenshot of a phoneAI-generated content may be incorre

Reopen your email from UniFi and select the **Load Credential Now** option.

A screenshot of a computerAI-generated content may be incor

After clicking this option, you will be directed back to the identity.ui.com website.

Select the **Load Your Credential** option to start the process.

A screenshot of a computer errorAI-generated content may b

The VPN will now open in the bottom right corner of your screen.

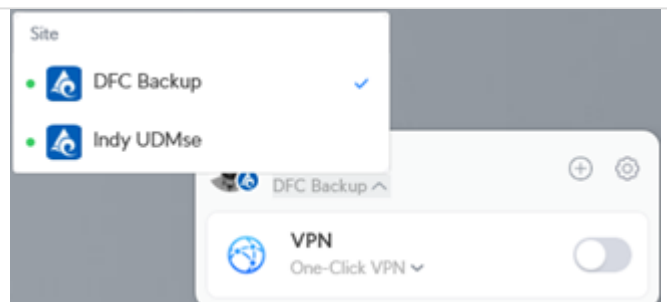
A screenshot of a computerAI-generated content may be incor

To turn the VPN on, simply **click the switch**.

A screenshot of a computerAI-generated content may be incor

You are now connected to the VPN!

Repeat steps 8-10 with the second Welcome email to add the alternative VPN site.



Revision #2

Created 30 September 2025 02:35:26 by Tyler Jones

Updated 30 September 2025 02:47:43 by Tyler Jones